



**ONE-STOP BUILDING MATERIALS  
SUPPLY CHAIN PROVIDER**

**CHANGSHA XIANGJIA METAL MATERIAL CO.,LTD**

HEAD QUARTERS:  
9F,11F,16F,18F,MINGCHENG INTL BLDG,CHANGSHA CITY,CHINA  
TEL: +86-731-8281 0015 +86-186 7036 2088

PRODUCTION BASE #1: DAQIUZHUANG COUNTY, HUBEI, CHINA  
PRODUCTION BASE #2: TANGSHAN CITY, HEBEI, CHINA  
PRODUCTION BASE #3: NANJING, CHINA  
PRODUCTION BASE #4: SHOUGUANG, SHANDONG, CHINA  
PRODUCTION BASE #5: SHIJIAZHUANG, HEBEI, CHINA



**PRODUCT MANUAL**  
**ONE-STOP BUILDING MATERIALS SUPPLY CHAIN PROVIDER**

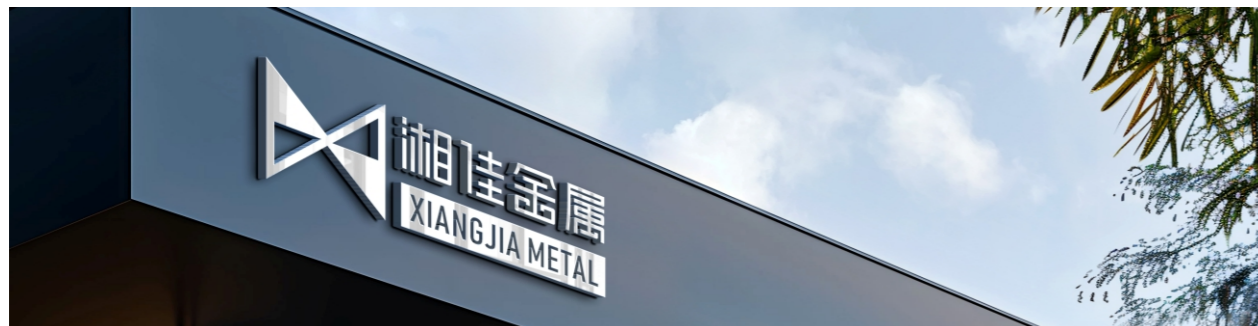
**RELIABLE SCAFFOLD SUPPLIER | SCAFFOLD MANUFACTURER | ADTO SCAFFOLD**

# ABOUT US

Established in 2005, Changsha Xiangjia Metal Material Co., Ltd. (hereinafter referred to as "Xiangjia Metal") is a professional one-stop provider of building materials supply chain. We are committed to integrating premium global resources to deliver comprehensive building materials solutions for OEM clients and large end-users worldwide, including contractors, builders, and distributors, enhancing your overall competitiveness.

Our core products cover full-range of scaffolding systems including Ringlock, Pipes & clamps, Cuplock, Frames, Kwikstage and formwork systems including Aluminum formwork, Steel Formwork, Table formwork, Plywood, Plastic formwork and so on, along with complete range of building materials such as Building steels, Hardware, Water supply and Drainage, Safety protection, Waterproof insulation layer, Electrical equipment, Construction machinery, Lighting fixtures, Fire-fighting equipment, Decoration and renovation, Household items and Container house. Our own R&D institution, production base, testing laboratory and information system help us realizing true "one-stop procurement and full-process service" from R&D, design, production, quality inspection to after-sales service and technical support.

With our excellent supply chain integration capabilities, advanced automated manufacturing, and comprehensive international certification system, Xiangjia Metal not only meets the high-standard customization demands of OEM clients but also delivers efficient and reliable building materials supply with ancillary services to downstream large-scale end-users. We focus on reducing your total costs and ensure the efficient advancement of the project as your steadfast partner in enhancing project execution and market competitiveness. Choosing Xiangjia Metal means choosing quality and safety assurance, efficiency and reliability. One-stop solution ensures future success!



## PRODUCT MANUAL

ONE-STOP BUILDING MATERIALS  
SUPPLY CHAIN PROVIDER

RELIABLE SCAFFOLD SUPPLIER | SCAFFOLD MANUFACTURER | ADTO SCAFFOLD

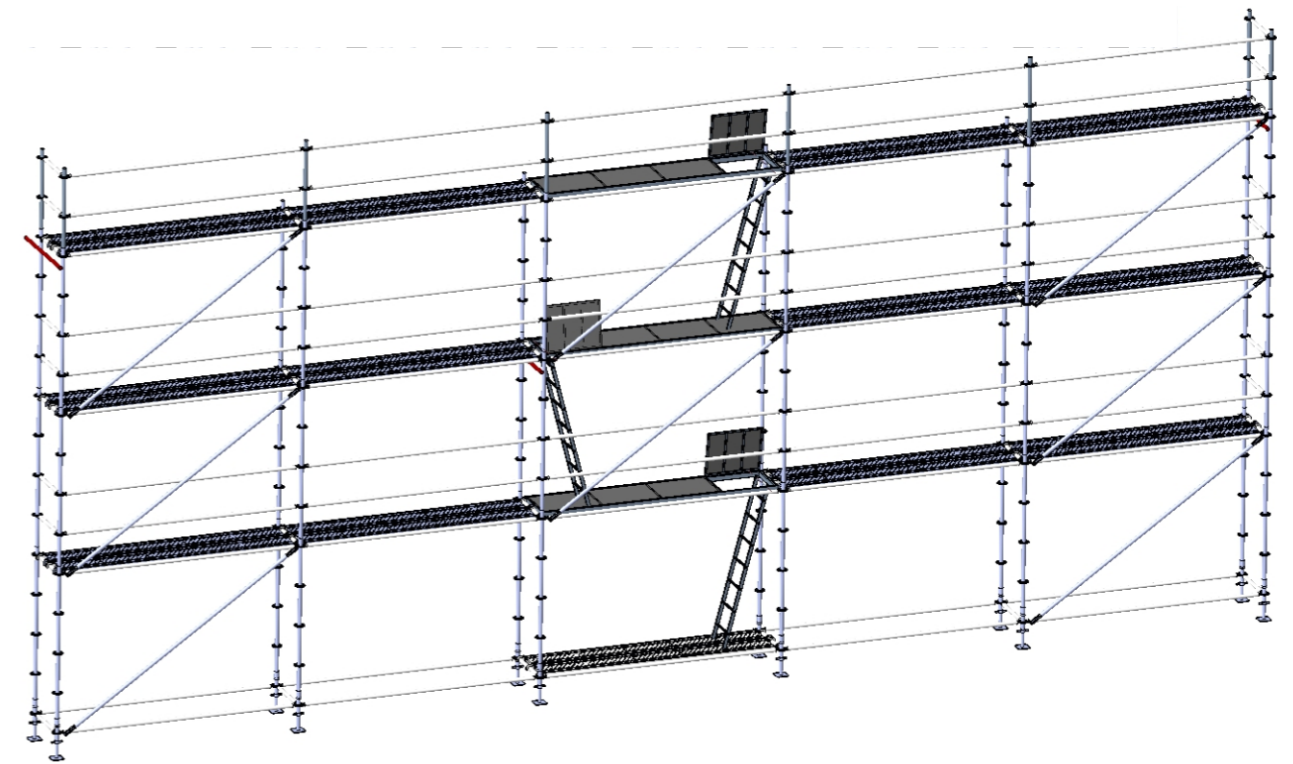


## CONTENTS

- 01-14 RINGLOCK SYSTEM
- 15-17 CUPLOCK SYSTEM
- 18-21 KWIKSTAGE SYSTEM
- 22-26 TUBLAR SYSTEM
- 27-31 ALUMINUM MOBILE SCAFFOLD TOWERS
- 32-33 MUTI-FUNCTIONAL STEEL SCAFFOLD
- 34-35 MOBILE ELECTRIC SCAFFOLDING LIFT PLATFORM
- 36-40 FORMWORK ACCESSORIES

# RINGLOCK SYSTEM

A breakthrough in modular scaffolding, the Ringlock System combines versatility, strength, and efficiency to meet the demands of modern projects. Its innovative design features interlocking rosettes that seamlessly connect horizontal ledgers and vertical standards, enabling rapid assembly and highly customizable configurations. Renowned for exceptional load-bearing capacity and stability, the system ensures safety in diverse applications—from construction and industrial maintenance to event staging and temporary structures. The intuitive, tool-free components reduce setup time and labor costs, while its robust build guarantees long-term reliability. Whether for complex frameworks or simple access platforms, the Ringlock System delivers adaptability without compromising performance. Elevate your projects with a scaffolding solution that merges cutting-edge engineering with practical functionality.



## SCAFFOLD SURFACE

Scaffold surface in m	300	1000
Scaffold length x working height in m	20x15	50x20

## BASIC EQUIPMENT

## ARTICLE NO.

Base jack 0.60 m	16	36
Base Caller 0.329 m	16	36
Standard with spigot 2 m	112	360
Standard with spigot 1 m	16	36
O Legder 0.732 m	98	254
O Legder 3.070 m	217	731
Vertical diagonal brace H2.0L3.070	21	60
Aluminium ladder frame with integrated ladder for Ushaped hook-up, 3.07 m	7	20
Steel plank O type 3.070 m	98	340
Drop Forged Double Coupler	32	90
Wall Tie	16	45
Weight in kg	7,265	23775

# RINGLOCK SCAFFOLD STAIR

## ADVANTAGES

1. Safe stair access which confirms to ergonomics;
2. Applicable to various construction projects;
3. Can be used as emergency evacuation access in public areas;
4. Single and double segment stairs can be chosen;
5. Easy to assemble and dismantle;
6. Few components;
7. Versatile design to ensure compatible with various scaffolds;
8. Concise design and high load-bearing capacity;

**These scaffold stair accesses have a height up to 24m.  
Height over 24m depends on structural analysis.**



### MAIERIALS REQUIRED PER A UNIT OF SIZE WIDTH 1.4M X LENGTH 2.57M

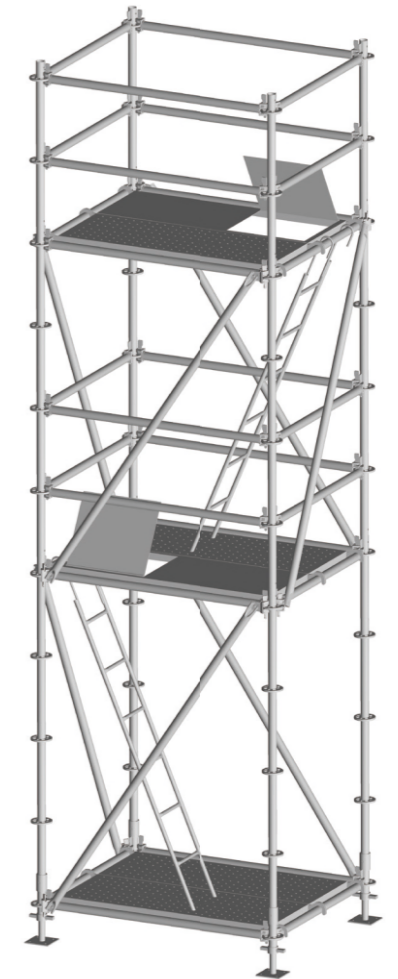
BASIC EQUIPMENT	QTYIPC	UNIT W.T(KG)
Base jack 0.60 m	4	3.84
Base Collar 0.329 m	4	1.81
Standard with spigot 2 m	12	10.48
Standard with spigot 1 m	4	5.78
O Legder 1.4m	24	5.93
O Legder 2.57m	24	10.26
Vertical diagonal brace H2.0L2.57	6	11.61
Vertical diagonal brace H2.0L1.4	6	9.16
Auminium Platform Stair O-Type 2.57 m	3	21.9
Steel plank O type 2.57 m	2	20.82
Total Weight in kg		737

# SCAFFOLD WORKING TOWER

## ADVANTAGES

1. Multiple usages: outdoor or indoor scaffolding;
2. Modular design to ensure easy and safe to assemble
3. Movable when installed casters;
4. Big platform so easy to work;
5. Can be moved at one time by a crane or other lifting machines.

**These working towers have a height up to 8m  
when used independently;  
when connecting with tubes, the height can be  
up to 24m.**



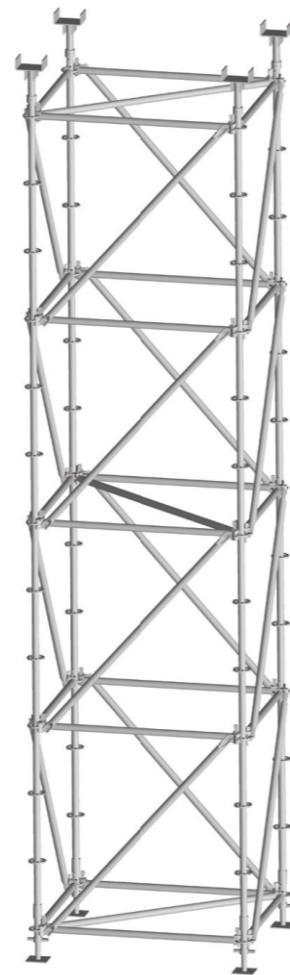
### MAIERIALS REQUIRED PER A UNIT OF SIZE 1.4M X 2.07M

BASIC EQUIPMENT	QTYIPC	UNIT W.T(KG)
Base jack 0.60 m	4	3.84
Base Collar 0.329 m	4	1.81
Standard with spigot 2 m	8	10.48
Standard with spigot 1 m	4	5.78
O Legder 1.4m	14	5.93
O Legder 2.07 m	14	8
Vertical diagonal brace H2.0L2.07	4	10.45
Vertical diagonal brace H2.0L1.4	3	9.16
Aluminium ladder frame with integrated ladder 2.07 m	2	22
Aluminium ladder frame without integrated ladder 2.07 m	4	20
Total Weight in kg		518

# RINGLOCK HEAVY DUTY SHORING SYSTEM

## ADVANTAGES

1. Modular design to ensure assembling and dismantling easily and fast;
2. Concise design and high loading capacity;
3. Compressive strength up to 400KN;
4. Versatile components can be used in outdoor scaffolding or access towers;



### MATERIALS REQUIRED PER A UNIT OF SIZE 1.57M x 1.57M

BASIC EQUIPMENT	QTY/PC	UNIT W.T(KG)
Base jack 0.60 m	4	3.84
Base Caller 0.329 m	4	1.81
Standard with spigot 3 m	8	15.1
O Legder 1.57m	20	5.93
Vertical diagonal brace H1.57L1.57	16	10.45
Horizontal diagonal brace W1.57L1.57	3	8.97
Head Jack (U Jack)	2	5.86
Total Weight in kg		408

## BASE JACK

ITEM CODE	DESCRIPTION	SIZE(M)	WEIGHT APPROX.(KG)
AD-YP2-PS0.4	Used to level the scaffold	0.40	3.17
AD-YP2-PS0.5	Tubular spindle with round thread fitted with nut and 15X15 cm base plate	0.50	3.51
AD-YP2-PS0.6		0.60	3.84
AD-YP2-PS0.8		0.80	4.51



## SWIVEL JACK

ITEM CODE	DESCRIPTION	SIZE(M)	WEIGHT APPROX.(KG)
AD-YP2-PS0.4-XZ		0.40	3.45
AD-YP2-PS0.5-XZ	Max. spindle travel 0.45m L=0.6m	0.50	3.51
AD-YP2-PS0.6-XZ		0.60	4.73
AD-YP2-PS0.8-XZ		0.80	5.40



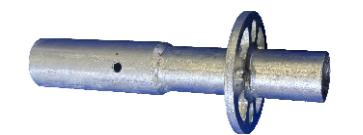
## HEAD JACK (U JACK)

ITEM CODE	DESCRIPTION	SIZE(M)	WEIGHT APPROX.(KG)
AD-UJACK-450	Accommodates wood sections or steelbeams and serves to adjust height and introduce loads	0.45	5.86
AD-UJACK-600		0.6	6.19



## BASE COLLAR

ITEM CODE	DESCRIPTION	SIZE(M)	WEIGHT APPROX.(KG)
AD-YP2-Q01	Forms the scaffold base together with base jacks, facilitates the horizontal alignment	0.33	1.81



## CASTOR WITH JACK

ITEM CODE	DESCRIPTION	SIZE(M)	WEIGHT APPROX.(KG)
AD-YP2-SGJL	Securing through a winged screw	0.50	6.75



## STANDARD WITH PRESSED-IN SPIGOT

ITEM CODE	DESCRIPTION	SIZE(M)	WEIGHT APPROX.(KG)
AD-YP2-L01-050		0.50	3.34
AD-YP2-L01-100		1.00	5.70
AD-YP2-L01-150	With rosettes at every 50cm for a max. of 8 connections	1.50	8.04
AD-YP2-L01-200		2.00	10.40
AD-YP2-L01-250		2.50	12.74
AD-YP2-L01-300		3.00	15.10
AD-YP2-L01-400		4.00	19.80



**STANDARD WITH BOLTED SPIGOT**

ITEM CODE	DESCRIPTION	SIZE(M)	WEIGHT APPROX.(KG)
AD-YP2-L02-050	Vertical upright with screwed-in spigot fitting	0.50	3.99
AD-YP2-L02-100	including special bolts	1.00	6.35
AD-YP2-L02-150		1.50	8.69
AD-YP2-L02-200	perforated discs every 50 cm	2.00	11.05
AD-YP2-L02-250	distance of tubing lower edge to first perforated disc:400mm	2.50	13.39
AD-YP2-L02-300		3.00	15.75
AD-YP2-L02-400		4.00	20.45



**SPIGOT**

ITEM CODE	DESCRIPTION	SIZE(M)	WEIGHT APPROX.(KG)
AD-YP2--LJB0.31-202	Pressed-in spigot	0.31	0.98
AD-YP2--LJB0.52-202	Spigot for suspended scaffolds with 2 sets of bolt and nut	0.52	1.65



**O-LEDGER**

ITEM CODE	DESCRIPTION	SIZE(M)	WEIGHT APPROX.(KG)
AD-YP2-OH01-039		0.39	2.19
AD-YP2-OH01-073	With wedge connection heads at both ends, Used in different lengths as support for ledger decks of standard scaffold planks as well as guard rails and to reinforce the scaffold	0.73	3.45
AD-YP2-OH01-109		1.09	4.77
AD-YP2-OH01-129		1.29	5.5
AD-YP2-OH01-140		1.40	5.93
AD-YP2-OH01-157		1.57	6.56
AD-YP2-OH01-207		2.07	8.41
AD-YP2-OH01-257		2.57	10.26
AD-YP2-OH01-307		3.07	12.12



**O-REINFORCED LEDGER**

ITEM CODE	DESCRIPTION	SIZE(M)	WEIGHT APPROX.(KG)
AD-YP2-OH02-109	For supporting bigger loads in combination with ledger decks	1.09	6.98
AD-YP2-OH02-129		1.29	8.2
AD-YP2-OH02-140		1.40	8.9



**O-BRIDGING LEDGER**

ITEM CODE	DESCRIPTION	SIZE(M)	WEIGHT APPROX.(KG)
AD-YP2-OH03	Designed to support scaffold decks if large bay areas are required, Alternatively to support scaffold in case of spanning obstructions	1.57	9.55
AD-YP2-OH04		2.07	12.57
AD-YP2-OH05		2.57	15.59
AD-YP2-OH06		3.07	18.61



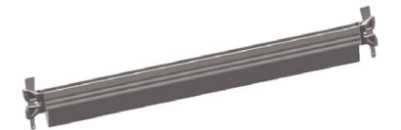
**U-TRANSOM**

ITEM CODE	DESCRIPTION	SIZE(M)	WEIGHT APPROX.(KG)
AD-YP2-UH01-045	For the use of standard decks at the allround system	0.45	2.19
AD-YP2-UH01-073		0.73	3.16
AD-YP2-UH01-109		1.09	4.38



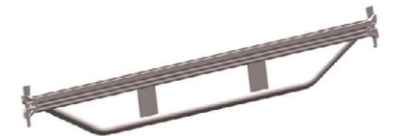
**U-REINFORCED TRANSOM**

ITEM CODE	DESCRIPTION	SIZE(M)	WEIGHT APPROX.(KG)
AD-YP2-UH02-109	To support decks at wider scaffold bays	1.09	6.58
AD-YP2-UH02-140		1.40	8.40



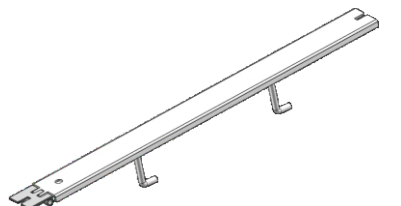
**U-BRIDGING LEDGER**

ITEM CODE	DESCRIPTION	SIZE(M)	WEIGHT APPROX.(KG)
AD-YP2-UH03-157	With additional reinforcing tube taking bigger loads ,for the use of standard decks at the Allround system	1.57	9.69
AD-YP2-UH03-207		2.07	12.81
AD-YP2-UH03-257		2.57	15.94
AD-YP2-UH03-307		3.07	19.07



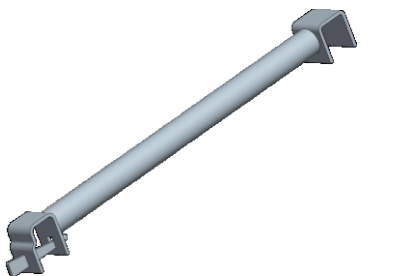
**DECK RETAINER/LIFT-OFF PREVENTOR**

ITEM CODE	DESCRIPTION	SIZE(M)	WEIGHT APPROX.(KG)
AD-YP2-UXGB-02-073		0.73	
AD-YP2-UXGB-02-109	For safeguarding against lifting of U-transoms, U-bridging ledgers used on the decks ledgers.	1.09	
AD-YP2-UXGB-02-140		1.4	
AD-YP2-UXGB-02-157		1.57	
AD-YP2-UXGB-02-207		2.07	
AD-YP2-UXGB-02-257		2.57	
AD-YP2-UXGB-02-307		3.07	



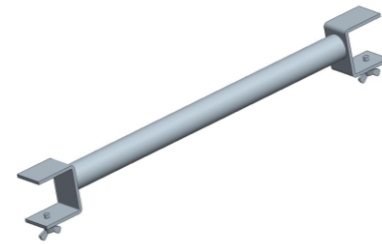
**O-TYPE MIDDLE TRANSOM**

ITEM CODE	DESCRIPTION	SIZE(M)	WEIGHT APPROX.(KG)
AD-YP2-OZJG-073	Connected to ledgers by means of U-profile hooks in order to shorten the free space within a scaffold bay. Scaffold bay can then be partially decked with system decks or scaffold planks	0.73	4
AD-YP2-OZJG-109		1.09	5.32
AD-YP2-OZJG-140		1.40	6.47
AD-YP2-OZJG-207		2.07	8.96
AD-YP2-OZJG-257		2.57	10.81
AD-YP2-OZJG-307		3.07	12.66



**O-TYPE PLANK TO PLANK TRANSOM**

ITEM CODE	DESCRIPTION	SIZE(M)	WEIGHT APPROX.(KG)
AD-YP2-OZJG-01-032	Centre design O-type	0.32	3.18
AD-YP2-OZJG-01-064	Fastening on steel plankings on both side	0.64	4.37
AD-YP2-OZJG-01-096		0.96	5.55



**O-TYPE LEDGER TO PLANK TRANSOM**

ITEM CODE	DESCRIPTION	SIZE(M)	WEIGHT APPROX.(KG)
AD-YP2-OZJG-02-032	Edge design O-type Each once side-bearing on tube	0.32	3.02
AD-YP2-OZJG-02-064	ledger/fastening on steel planks	0.64	4.24
AD-YP2-OZJG-02-096		0.96	5.45



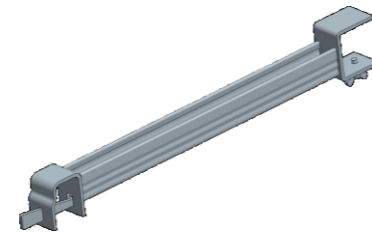
**U-TYPE PLANK TO PLANK TRANSOM**

ITEM CODE	DESCRIPTION	SIZE(M)	WEIGHT APPROX.(KG)
AD-YP2-UZJG-01-032	Centre design U-type	0.32	3.1
AD-YP2-UZJG-01-064	Fastening on steel plankings on both side	0.64	4.2
AD-YP2-UZJG-01-096		0.96	5.3



**U-TYPE LEDGER TO PLANK TRANSOM**

ITEM CODE	DESCRIPTION	SIZE(M)	WEIGHT APPROX.(KG)
AD-YP2-UZJG-02-032	Edge design U-type Each once side-bearing on tube	0.32	2.97
AD-YP2-UZJG-02-064	ledger/fastening on steel planks	0.64	4.07
AD-YP2-UZJG-02-096		0.96	5.17



**STEEL TOE BOARD**

ITEM CODE	DESCRIPTION	SIZE(M)	WEIGHT APPROX.(KG)
AD-YP2-TJB001-073	Toeboards are assembled at platform height and complete the required three part side protection. The toeboards are fixed between wedge and standard of modular scaffold	0.73	2.69
AD-YP2-TJB001-109		1.09	3.76
AD-YP2-TJB001-140		1.40	4.69
AD-YP2-TJB001-157		1.57	5.12
AD-YP2-TJB001-207		2.07	6.59
AD-YP2-TJB001-257		2.57	8.07
AD-YP2-TJB001-307		3.07	9.36



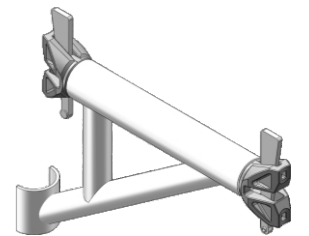
**U-TRANSOM**

ITEM CODE	DESCRIPTION	SIZE(M)	WEIGHT APPROX.(KG)
AD-YP2-X01-H050xL073	Wedge lock principle for positive and non-positive connections ,Without screwed connections, for bracing the basic scaffold	H0.5xL0.73	4.11
AD-YP2-X01-H050xL109		H0.5xL1.09	5.04
AD-YP2-X01-H050xL140		H0.5xL1.40	5.93
AD-YP2-X01-H050xL157		H0.5xL1.57	6.44
AD-YP2-X01-H050xL207		H0.5xL2.07	7.95
AD-YP2-X01-H050xL257		H0.5xL2.57	9.48
AD-YP2-X01-H050xL307		H0.5xL3.07	11.03
AD-YP2-X01-H100xL073		H1.0xL0.73	5.36
AD-YP2-X01-H100xL109		H1.0xL1.09	6.03
AD-YP2-X01-H100xL140		H1.0xL1.40	6.74
AD-YP2-X01-H100xL157		H1.0xL1.57	7.18
AD-YP2-X01-H100xL207		H1.0xL2.07	8.52
AD-YP2-X01-H100xL257		H1.0xL2.57	9.95
AD-YP2-X01-H100xL307		H1.0xL3.07	11.43
AD-YP2-X01-H200xL073		H2.0xL0.73	8.31
AD-YP2-X01-H200xL109		H2.0xL1.09	8.69
AD-YP2-X01-H200xL140		H2.0xL1.40	9.16
AD-YP2-X01-H200xL157		H2.0xL1.57	9.45
AD-YP2-X01-H200xL207		H2.0xL2.07	10.45
AD-YP2-X01-H200xL257		H2.0xL2.57	11.61
AD-YP2-X01-H200xL307	H2.0xL3.07	12.87	



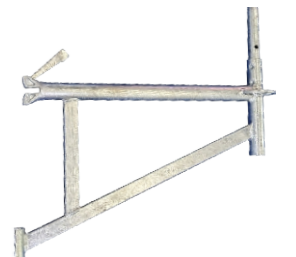
**O-TYPE HOP-UP BRACKET**

ITEM CODE	DESCRIPTION	SIZE(M)	WEIGHT APPROX.(KG)
AD-YP2-SJJO422	System brackets are available for quickly widening scaffolding bays and for converting projecting building parts and eaves. Side brackets, O-support	0.42	3.40
AD-YP2-SJJO732		0.73	5.59



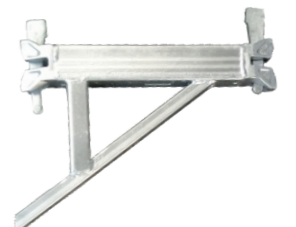
**O-TYPE HOP-UP BRACKET WITH SPIGOT**

ITEM CODE	DESCRIPTION	SIZE(M)	WEIGHT APPROX.(KG)
AD-YP2-SJJO390L	Side brackets, O-support with connecting spigot	0.39	4.35
AD-YP2-SJJO732L		0.73	7.33
AD-YP2-SJJO1088L		1.09	9.33



**U-TYPE HOP-UP BRACKET**

ITEM CODE	DESCRIPTION	SIZE(M)	WEIGHT APPROX.(KG)
AD-YP2-SJJU422	Side brackets, U-support	0.42	3.08
AD-YP2-SJJU732		0.73	5.28



**U-TYPE HOP-UP BRACKET WITH SPIGOT**

ITEM CODE	DESCRIPTION	SIZE(M)	WEIGHT APPROX.(KG)
AD-YP2-SJJU390L	Side brackets, U-support with connecting spigot	0.39	4.05
AD-YP2-SJJU732L		0.73	7.01



**LATTICE GIRDER**

ITEM CODE	DESCRIPTION	SIZE(M)	WEIGHT APPROX.(KG)
AD-YP2-HL4.144	suitable for bridging a distance or for surface scaffoldings for direct connection to perforated disc by means of the wedge head	4.14	43.78
AD-YP2-HL5.144		5.14	53.21
AD-YP2-HL6.144		6.14	62.65



**O-TYPE STEEL PLANK 320MM**

ITEM CODE	DESCRIPTION	SIZE(M)	WEIGHT APPROX.(KG)
AD-YP2-TB32O-L732	Steel ledger deck O-support	0.73	7.2
AD-YP2-TB32O-L1088	Perforated sheet steel, hot-dipped galvanized finish with forged connecting claws. Designed to suit all ledgers, double ledgers, lattice girders and side brackets that have OD48.3mm tube as support. With integrated deck retainer. Decks are available in width of 32cm, 30cm and 19cm	1.09	9.68
AD-YP2-TB32O-L1400		1.40	11.69
AD-YP2-TB32O-L1572		1.57	12.63
AD-YP2-TB32O-L2072		2.07	16.63
AD-YP2-TB32O-L2572		2.57	20.82
AD-YP2-TB32O-L3072		3.07	24.3



**O-TYPE STEEL PLANK 300MM**

ITEM CODE	DESCRIPTION	SIZE(M)	WEIGHT APPROX.(KG)
AD-YP2-TB30O-L732	Steel ledger deck O-support	1.00	9.32
AD-YP2-TB30O-L1088	Perforated sheet steel, hot-dipped galvanized finish with forged connecting claws. Designed to suit all ledgers, double ledgers, lattice girders and side brackets that have OD48.3mm tube as support. With integrated deck retainer. Decks are available in width of 32cm, 30cm and 19cm	1.30	11.12
AD-YP2-TB30O-L1400		1.50	12.23
AD-YP2-TB30O-L1572		2.00	15.42
AD-YP2-TB30O-L2072		2.50	18.39
AD-YP2-TB30O-L2572		3.00	21.34



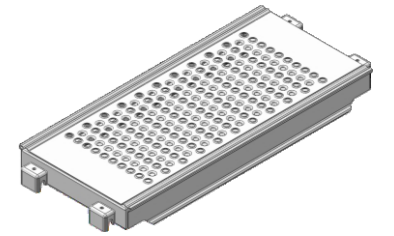
**O-TYPE STEEL PLANK 190MM**

ITEM CODE	DESCRIPTION	SIZE(M)	WEIGHT APPROX.(KG)
AD-YP2-TB19O-L732	Steel ledger deck O-support	0.73	6.18
AD-YP2-TB19O-L1088	Perforated sheet steel, hot-dipped galvanized finish with forged connecting claws. Designed to suit all ledgers, double ledgers, lattice girders and side brackets that have OD48.3mm tube as support. With integrated deck retainer. Decks are available in width of 32cm, 30cm and 19cm	1.09	8.15
AD-YP2-TB19O-L1400		1.40	10.06
AD-YP2-TB19O-L1572		1.57	11.29
AD-YP2-TB19O-L2072		2.07	14.21
AD-YP2-TB19O-L2572		2.57	16.85
AD-YP2-TB19O-L3072		3.07	19.31



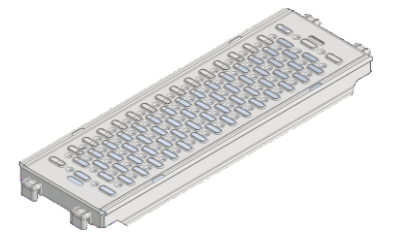
**U-TYPE STEEL PLANK 320MM**

ITEM CODE	DESCRIPTION	SIZE(M)	WEIGHT APPROX.(KG)
AD-YP2-TB32U-L732	Steel ledger deck U-support	0.73	6.90
AD-YP2-TB32U-L1088	The easy to handled perforated steel decks are extremely non-skid and safe. Depending on the length the. Max. capacity of these decks is load class 6. The decks should be checked before use. The 19cm steel filler decks will be used to close gaps at wider bays.	1.09	9.07
AD-YP2-TB32U-L1400		1.40	11.52
AD-YP2-TB32U-L1572		1.57	12.34
AD-YP2-TB32U-L2072		2.07	16.30
AD-YP2-TB32U-L2572		2.57	20.11
AD-YP2-TB32U-L3072		3.07	23.60



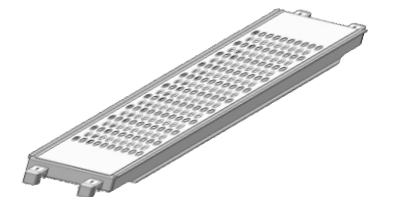
**U-TYPE STEEL PLANK 300MM**

ITEM CODE	DESCRIPTION	SIZE(M)	WEIGHT APPROX.(KG)
AD-YP2-TB30U-L732	Steel ledger deck U-support	1.00	9.32
AD-YP2-TB30U-L1088	The easy to handled perforated steel decks are extremely non-skid and safe. Depending on the length the. Max. capacity of these decks is load class 6. The decks should be checked before use. The 19cm steel filler decks will be used to close gaps at wider bays.	1.30	11.12
AD-YP2-TB30U-L1400		1.50	12.23
AD-YP2-TB30U-L1572		2.00	15.42
AD-YP2-TB30U-L2072		2.50	18.39
AD-YP2-TB30U-L2572		3.00	21.34



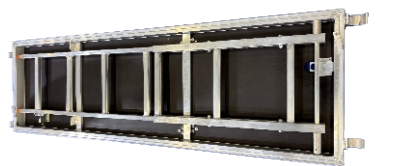
**U-TYPE STEEL PLANK 190MM**

ITEM CODE	DESCRIPTION	SIZE(M)	WEIGHT APPROX.(KG)
AD-YP2-TB19U-L732	Steel ledger deck U-support	0.73	5.08
AD-YP2-TB19U-L1088	The easy to handled perforated steel decks are extremely non-skid and safe. Depending on the length the. Max. capacity of these decks is load class 6. The decks should be checked before use. The 19cm steel filler decks will be used to close gaps at wider bays.	1.09	7.43
AD-YP2-TB19U-L1400		1.40	8.60
AD-YP2-TB19U-L1572		1.57	10.14
AD-YP2-TB19U-L2072		2.07	13.18
AD-YP2-TB19U-L2572		2.57	16.03
AD-YP2-TB19U-L3072		3.07	19.01



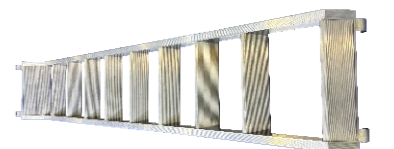
**ALUMINIUM FRAME LADDER HATCH DECK**

ITEM CODE	DESCRIPTION	SIZE(M)	WEIGHT APPROX.(KG)
AD-YP2-LKMTB-L2072	Fixing and decking replaceable, Plywood surface with Intergrated Aluminum Storay Ladder	0.61x2.07	22
AD-YP2-LKMTB-L2572		0.61x2.57	25
AD-YP2-LKMTB-L3072		0.61x3.07	28



**ALUMINIUM PLATFORM STAIR O-TYPE**

ITEM CODE	DESCRIPTION	SIZE(M)	WEIGHT APPROX.(KG)
AD-YP2-LLT-H2.0L2.57	Aluminum stair complete with upper and lower landing. With forged support claws of tubes 48.3mm and deck retainer.	2.0x2.57	21.9
AD-YP2-LLT-H2.0L3.07		2.0x3.07	23.6



**PLATFORM STAIR INNER GUARDRAILS**

ITEM CODE	DESCRIPTION	SIZE(M)	WEIGHT APPROX.(KG)
AD-YP2-NFS-H2.0L2.57	Used to provide a handrail on the inner and outer side of the alu staircase (steel)	2.0x2.57	10.5
AD-YP2-NFS-H2.0L3.07	Used to provide a handrail on the inner and outer side of the alu staircase (steel)	2.0x3.07	10.5

**PLATFORM STAIR OUTER GUARDRAILS**

ITEM CODE	DESCRIPTION	SIZE(M)	WEIGHT APPROX.(KG)
AD-YP2-WFS-H2.0L2.57	Used to provide a handrail on the inner and outer side of the alu staircase (steel)	2.0x2.57	18.19
AD-YP2-WFS-H2.0L3.07	Used to provide a handrail on the inner and outer side of the alu staircase (steel)	2.0x3.07	20.04

**STAIRWELL GUARDRAIL**

ITEM CODE	DESCRIPTION	SIZE(M)	WEIGHT APPROX.(KG)
AD-YP2-SWGR01	To prevent falls from the open side of a staircase	ST	8.4

**WALL TIE**

ITEM CODE	DESCRIPTION	SIZE(M)	WEIGHT APPROX.(KG)
AD-YP2-LQJ-L500	Scaffolding be anchored vertically to and parallel with the façade with resistance to both tensile and compressive stress.	0.5	2.1
AD-YP2-LQJ-L1000		1.0	3.84
AD-YP2-LQJ-L1500		1.45	5.52

**VST WALL TIE**

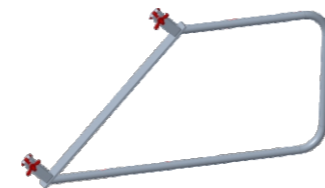
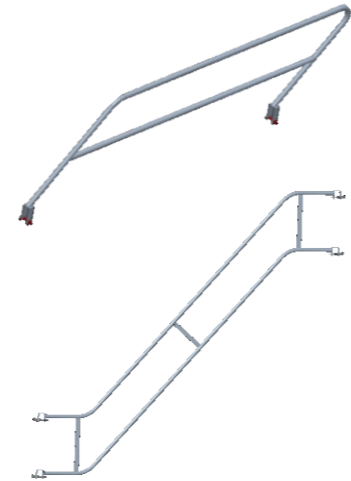
ITEM CODE	DESCRIPTION	SIZE(M)	WEIGHT APPROX.(KG)
AD-YP2-VLQJ-L500	Scaffolding be anchored vertically to and parallel with the façade with resistance to both tensile and compressive stress.	0.5	2.57
AD-YP2-VLQJ-L1000		1.0	4.34
AD-YP2-VLQJ-L1500		1.5	6.11
AD-YP2-VLQJ-L2000		2.0	7.88

**EYE BOLT**

ITEM CODE	DESCRIPTION	SIZE(MM)	WEIGHT APPROX.(KG)
AD-YP2-YYQ-L120	steel galvanized, OD12mm for expanding plug be used with wall tie to be tied to a solid structure	M12x120	0.174
AD-YP2-YYQ-L160		M12x160	0.207
AD-YP2-YYQ-L190		M12x190	0.234
AD-YP2-YYQ-L300		M12x300	0.325
AD-YP2-YYQ-L500		M12x500	0.495
AD-YP2-YYQ-L600		M12x600	0.579

**GUARDRAIL STANDARD**

ITEM CODE	SIZE(M)	WEIGHT APPROX.(KG)
AD-GRST-100	ST	5.6



**SPINDLE ATTACHMENT WITH WEDGE-HEAD**

ITEM CODE	SIZE(M)	WEIGHT APPROX.(KG)
AD-SPDA-600	0.6m	3.54

**ADJUSTABLE SAFETY GATE**

ITEM CODE	SIZE(M)	WEIGHT APPROX.(KG)
AD-YP-ADSFGT	0.732	6.6

**ROSETTE CLAMP**

ITEM CODE	SIZE(M)	WEIGHT APPROX.(KG)
AD-YP-RSTCL	ST	1.1

**SWIVEL ADAPTER CLAMP**

ITEM CODE	SIZE(M)	WEIGHT APPROX.(KG)
AD-YP-SWADCL	ST	1.3

**RIGHT ANGLE ADAPTER CLAMP**

ITEM CODE	SIZE(M)	WEIGHT APPROX.(KG)
AD-YP-RAADCL	ST	1.2

**LEG LOCK/SUSPENDED SCAFFOLD**

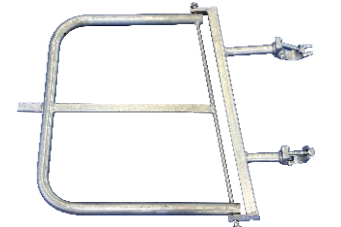
ITEM CODE	SIZE(M)	WEIGHT APPROX.(KG)
AD-YP-LGLK	0.5	3.56

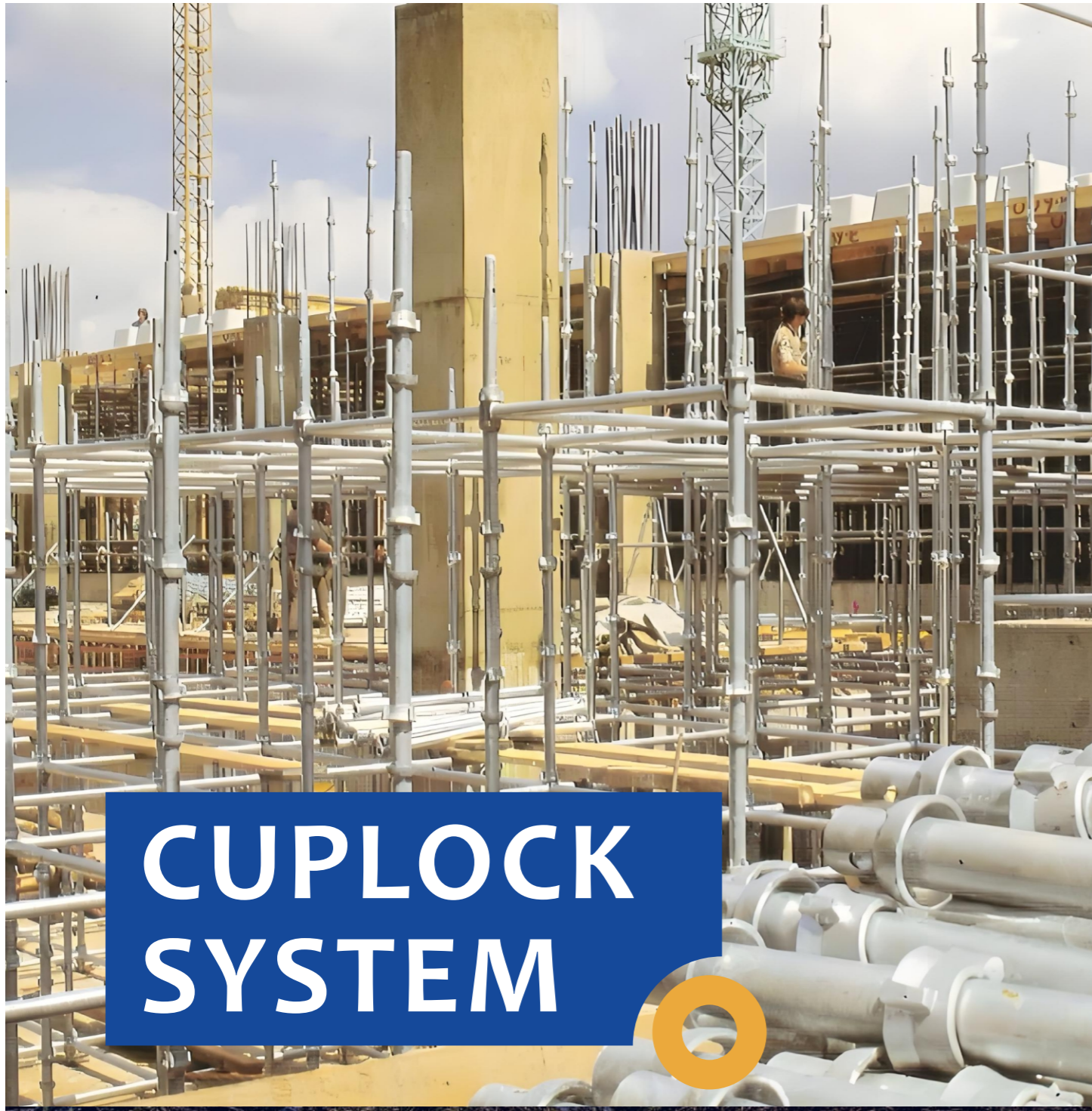
**SPIGOT ADAPTER CLAMP FOR GIRDERS**

ITEM CODE	SIZE(M)	WEIGHT APPROX.(KG)
AD-YP-SACLFG	ST	1.89

**SPIGOT ADAPTER CLAMP**

ITEM CODE	SIZE(M)	WEIGHT APPROX.(KG)
AD-YP-SACL	ST	1.93





# CUPLOCK SYSTEM

Cuplock scaffolding is a popular choice of modular system scaffolding with unique locking system, manufactured in a prefabricated nature-with no need for loose fittings or parts. it is versatile, safe efficient working platform with clear working lifts and full handrail.can be erected in straight or circular configurations and can be used for both access and support application.

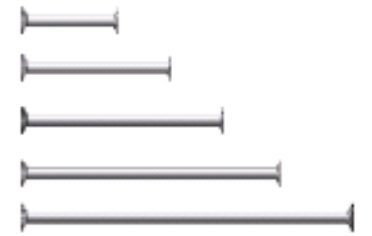
## CUPLOCK STANDARD,HDG

ITEM CODE	DESCRIPTION	SIZE(M)	WEIGHT APPROX.(KG)
ADTO01WKL0073	Standards incorporate lower fixed cups at 0.5m intervals with captive rotating top cups which secure up to four components. Access standards incorporate a spigot at the top to allow the vertical connection of further standards.	Q235/355,48.3x3.2mm 0.5m	3.32
ADTO01WKL0053		Q235/355,48.3x3.2mm 1m	5.86
ADTO01WKL0020		Q235/355,48.3x3.2mm 1.5m	7.73
ADTO01WKL0029		Q235/355,48.3x3.2mm 2m	10.3
ADTO01WKL0040	Access standards incorporate a spigot at the top to allow the vertical connection of further standards.	Q235/355,48.3x3.2mm 2.5m	12.88
ADTO01WKL0043		Q235/355,48.3x3.2mm 3m	15.45
ADTO01WKML0006	Spigot Connector	Q235,38x3.2x250mm	0.80



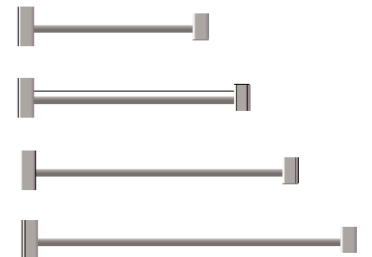
## CUPLOCK LEDGER,HDG

ITEM CODE	DESCRIPTION	SIZE(M)	WEIGHT APPROX.(KG)
ADTO01WKHG0012	All ledgers have identical forged blade ends,with a minimum of projection to avoid damage.Ledgers locate in the bottom cups of the standards and are secured by locking the top cup.	Q235,48.3x3.2mm 0.9m	3.64
ADTO01WKHG0119		Q235,48.3x3.2mm 1.3m	5.08
ADTO01WKHG0033		Q235,48.3x3.2mm 1.8m	6.93
ADTO01WKHG0042		Q235,48.3x3.2mm 2.5m	9.52



## INTERMEDIATE TRANSOM,HDG

ITEM CODE	DESCRIPTION	SIZE(M)	WEIGHT APPROX.(KG)
ADTO01WKCL0008	These units are designed to provide intermediate support for standard scaffold boards by spanning between the inner and outer ledgers. One end is provided with an integral locking device to prevent movement along the ledgers during use.	Q235,48.3x3.2mm 1.2m	5.92
ADTO01WKCL0024		Q235,48.3x3.2mm 1.3m	6.29
ADTO01WKCL0023		Q235,48.3x3.2mm 1.8m	8.14
ADTO01WKCL0020		Q235,48.3x3.2mm 2.5m	10.71



## DIAGONAL BRACE,HDG

ITEM CODE	DESCRIPTION	SIZE(M)	WEIGHT APPROX.(KG)
ADTO01WKMG0004	This component forms the face bracing of the scaffold. Braces come in differing lengths to suit combined bay sizes and lift heights. Each end has a swivel blade, which allows for easy location within the node joint.	Q235,48.3x3.0mm H1.5xL1.8m	8.88
ADTO01WKMG0007		Q235,48.3x3.0mm H1.5xL2.5m	11.23
ADTO01WKMG0005		Q235,48.3x3.0mm H2xL1.8m	10.44
ADTO01WKMG0006		Q235,48.3x3.0mm H2xL2.5m	12.23



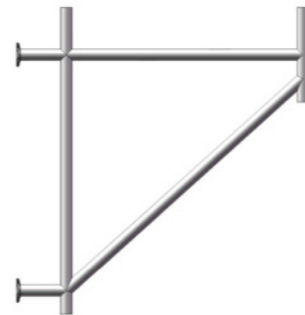
**HOP-UP BRACKETS,HDG**

ITEM CODE	DESCRIPTION	SIZE(M)	WEIGHT APPROX.(KG)
ADTO01WKPJ0020	The demand for wider working platforms has increased with changes in construction practices. The Inside Board Bracket provides options for 2 or 3 board inside platform. It has a cup connection at the end where an inside ledger can be accommodated. A handrail post can be located at the end for fall protection to the inside face if required.	Q235,48.3x3.2mm 570mm 2 boards	5.63
ADTO01WKPJ0033		Q235,48.3x3.2mm 795mm 3 boards	6.99



**CANTILEVER BEAM FRAME,HDG**

ITEM CODE	DESCRIPTION	SIZE(M)	WEIGHT APPROX.(KG)
ADTO01WKPJ0029	This component is typically used when support on the base slab is not possible, especially when drop beams around the perimeter of the buildings needs to be supported and the earth around the building is not levelled / compacted. In most cases it is used from the first floor onwards to either support the drop beams or as access for the working personnel.	Q235,48.3x3.2mm 570mm 2 boards	5.63
ADTO01WKPJ0028	Three hollow tubes at the edge allows slight adjustments from 1.2m to 1.3m and they come in 2 sizes – 1.0m & 1.5m	Q235,48.3x3.2mm 795mm 3 boards	6.99



**BASE JACK**

ITEM CODE	DESCRIPTION	SIZE(M)	WEIGHT APPROX.(KG)
ADTO01SGPB0211	A combined jack and base plate designed for levelling the scaffold where the ground or foundation levels vary. These are adjusted by winding the collar up and down the threaded stem.	M38 (150x150x5.0mm) 0.65m	3.56



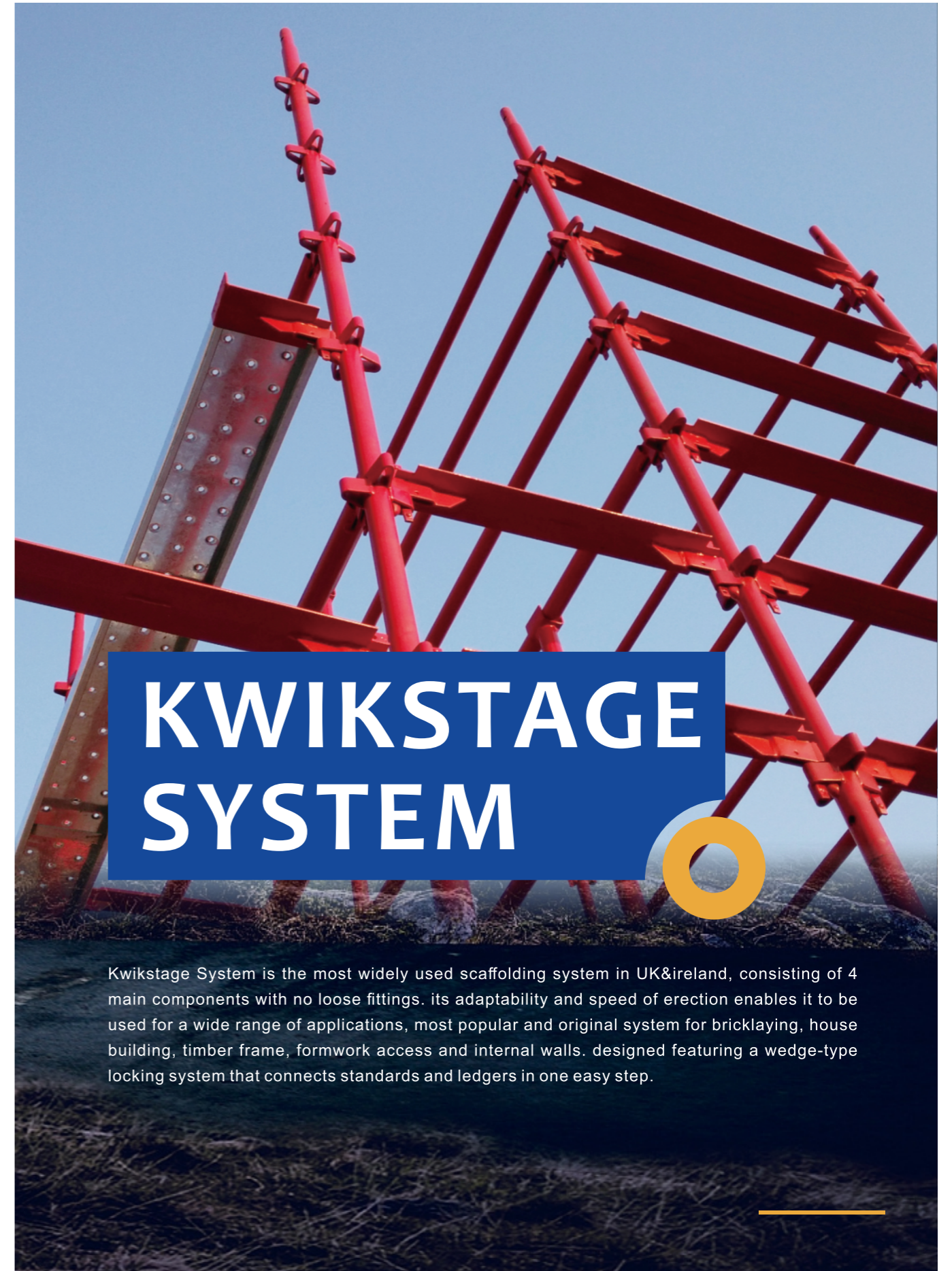
**STEEL STAGE**

ITEM CODE	DESCRIPTION	SIZE(M)	WEIGHT APPROX.(KG)
ADTO01TBAB0331	Pre-galvanised steel battens are available for use with the cuplock system. 63mm thick and 225mm wide, with a slip resistant perforated surface.	230x63x1.8x1250mm	7.58
ADTO01TBAB1470		230x63x1.7x1750mm	10.66
ADTO01TBAB1230		230x63x1.7x2450mm	14.38



**SINGLE SIDE BOARD SUPPORT HDG**

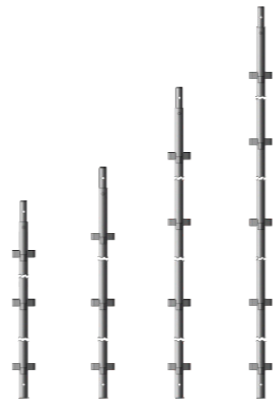
ITEM CODE	DESCRIPTION	SIZE(M)	WEIGHT APPROX.(KG)
ADTO01WKPJ0034	This item is located at the standards to provide support for a single inside board.	Q235,48.3x3.2x300mm	1.33



Kwikstage System is the most widely used scaffolding system in UK&ireland, consisting of 4 main components with no loose fittings. its adaptability and speed of erection enables it to be used for a wide range of applications, most popular and original system for bricklaying, house building, timber frame, formwork access and internal walls. designed featuring a wedge-type locking system that connects standards and ledgers in one easy step.

**STANDARD WITH SPIGOT**

ITEM CODE	DESCRIPTION	SIZE(M)	WEIGHT APPROX.(KG)
ADTO01XXLG0026	The standard is the vertical member of the scaffold with a spigot (either round or box type) at one end for accurate alignment. A series of 'V' locating lugs are welded on the tube for the attachment of ledgers, transoms, and auxiliary components. Open ended standards and loose spigots are also available.	Q235,48.3x4mm L2971mm ( 9'9" )	18.49
ADTO01XXLG0066		Q235,48.3x4mm L2476mm ( 8'1.5" )	15.56
ADTO01XXLG0020		Q235,48.3x4mm L1981mm ( 6'6" )	12.63
ADTO01XXLG0067		Q235,48.3x4mm L1486mm ( 4'10.5" )	9.7
ADTO01XXLG0068		Q235,48.3x4mm L991mm ( 3'3" )	6.77
ADTO01XXLG0069		Q235,48.3x4mm L495mm ( 1'7.5" )	3.84



**LEDGER**

ITEM CODE	DESCRIPTION	SIZE(M)	WEIGHT APPROX.(KG)
ADTO01XXHG0014	The ledger is used to connect the standard in a longitudinal direction. It is made from scaffold tube with wedge 'Banana Type' fixing at each end which fits in the 'V' locating lugs on the standard. The ledger is also used as a guardrail.	Q235,48.3x3.2mm L2438mm ( 8' )	9.81
ADTO01XXHG0047		Q235,48.3x3.2mm L1829mm ( 6' )	7.56
ADTO01XXHG0048		Q235,48.3x3.2mm L1270mm ( 4'2" )	5.50
ADTO01XXHG0050		Q235,48.3x3.2mm L812mm ( 2'8" )	3.80
ADTO01XXHG0051		Q235,48.3x3.2mm L760mm ( 2'6" )	3.61



**TRANSOM**

ITEM CODE	DESCRIPTION	SIZE(M)	WEIGHT APPROX.(KG)
ADTO01XXJG0008	Transom is either made of back-to-back angle or T-shaped profile with the same fixing device on each end as the ledger. They are used to carry 3 or 5 numbers of steel or timber battens and toeboard.	Q235,50x5mm L1270mm ( 4'2" )	10.13
ADTO01XXJG0001		Q235,50x5mm L812mm ( 2'8" )	6.68
ADTO01XXJG0007		Q235,50x5mm L760mm ( 2'6" )	6.13
ADTO01XXJG0016		Q235,50x5mm L560mm ( 1'10" )	4.56



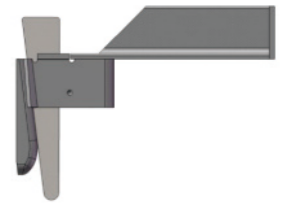
**BRACE**

ITEM CODE	DESCRIPTION	SIZE(M)	WEIGHT APPROX.(KG)
ADTO01XXMG0007	The diagonal brace is used to the full height of the scaffolding in a longitudinal direction.	Q235,48.3x3.0mm H1981xL1829mm(2.7m)	11.29
ADTO01XXMG0009		Q235,48.3x3.0mm H1981xL2438mm(3.2m)	12.84
ADTO01XXMG0012		Q235,48.3x3.0mm H2476xL2438 (3.5m)	14.01



**HOP UP BRACKET**

ITEM CODE	DESCRIPTION	SIZE(M)	WEIGHT APPROX.(KG)
ADTO01XXPJ0058	To extend the scaffold by cantilevering for an additional 1, 2 or 3 board platform.	L 762mm ( 3 BOARD )	10.43
ADTO01XXPJ0048		L 510mm ( 2 BOARD )	6.47
ADTO01XXPJ0043		L 240mm ( 1 BOARD )	2.52



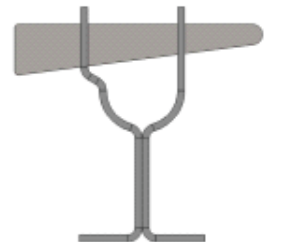
**TIE BAR**

ITEM CODE	DESCRIPTION	SIZE(M)	WEIGHT APPROX.(KG)
ADTO01XXPJ0019	For connecting the access brackets along the length of the platform. This ensures correct spacing so that the battens are not dislodged.	L 2438mm ( 8' )	6.16
ADTO01XXPJ0016		L 1829mm ( 6' )	4.62
ADTO01XXPJ0010		L 1270mm ( 4' )	3.22



**TOE BOARD BRACKET**

ITEM CODE	DESCRIPTION	SIZE(M)	WEIGHT APPROX.(KG)
ADTO01XXPJ0062	Clamps to the standard with a captive wedge to hold the batten toe board vertically in place.	HDG	0.86



**END TOE BOARD BRACKET**

ITEM CODE	DESCRIPTION	SIZE(M)	WEIGHT APPROX.(KG)
ADTO01XXPJ0064	Fits into 'V' locating lugs on the standard at the end of a platform to hold the end batten toe board vertically in place.	HDG	1.13



**WALL TIE**

ITEM CODE	DESCRIPTION	SIZE(M)	WEIGHT APPROX.(KG)
ADTO01XXPJ0001	Wall tie brackets one half coupler and two half couplers suitable to hold 48.30 OD tube are used to secure the scaffold to a structure.	Q235, Electr-galv. 250x100mm	3.10
ADTO01XXPJ0119		Q235, Electr-galv. 150x100mm	2.31



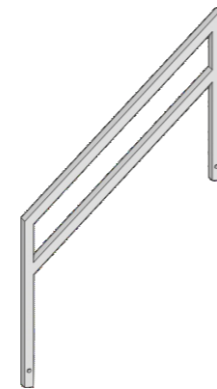
**K-STAGE BATTEN**

ITEM CODE	DESCRIPTION	SIZE(M)	WEIGHT APPROX.(KG)
ADTO01TBAB0335	The steel platform batten spans between the transoms giving a non-slip level surface.	230×63×1.8x2420mm	14.98
ADTO01TBAB0333		230×63×1.8x1810mm	11.54
ADTO01TBAB0331		230×63×1.8x1250mm	7.85



**ALUMINIUM STAIRCASE**

ITEM CODE	DESCRIPTION	SIZE(M)	WEIGHT APPROX.(KG)
ADTO01XXTG0016	Manufactured from aluminium, and the width is 575mm.	W575xL2420xH1981mm	37.2
ADTO01XXTG0010		W575xL2420xH1486mm	36.25



**ALLOY HANDRAIL**

ITEM CODE	DESCRIPTION	SIZE(M)	WEIGHT APPROX.(KG)
ADTO01XXTG0016	The handrail is used in combination with the aluminum staircase.	1300x2364x40x3.2mm	7.20
ADTO01XXTG0010		1067x1067x40x3.2mm	6.42

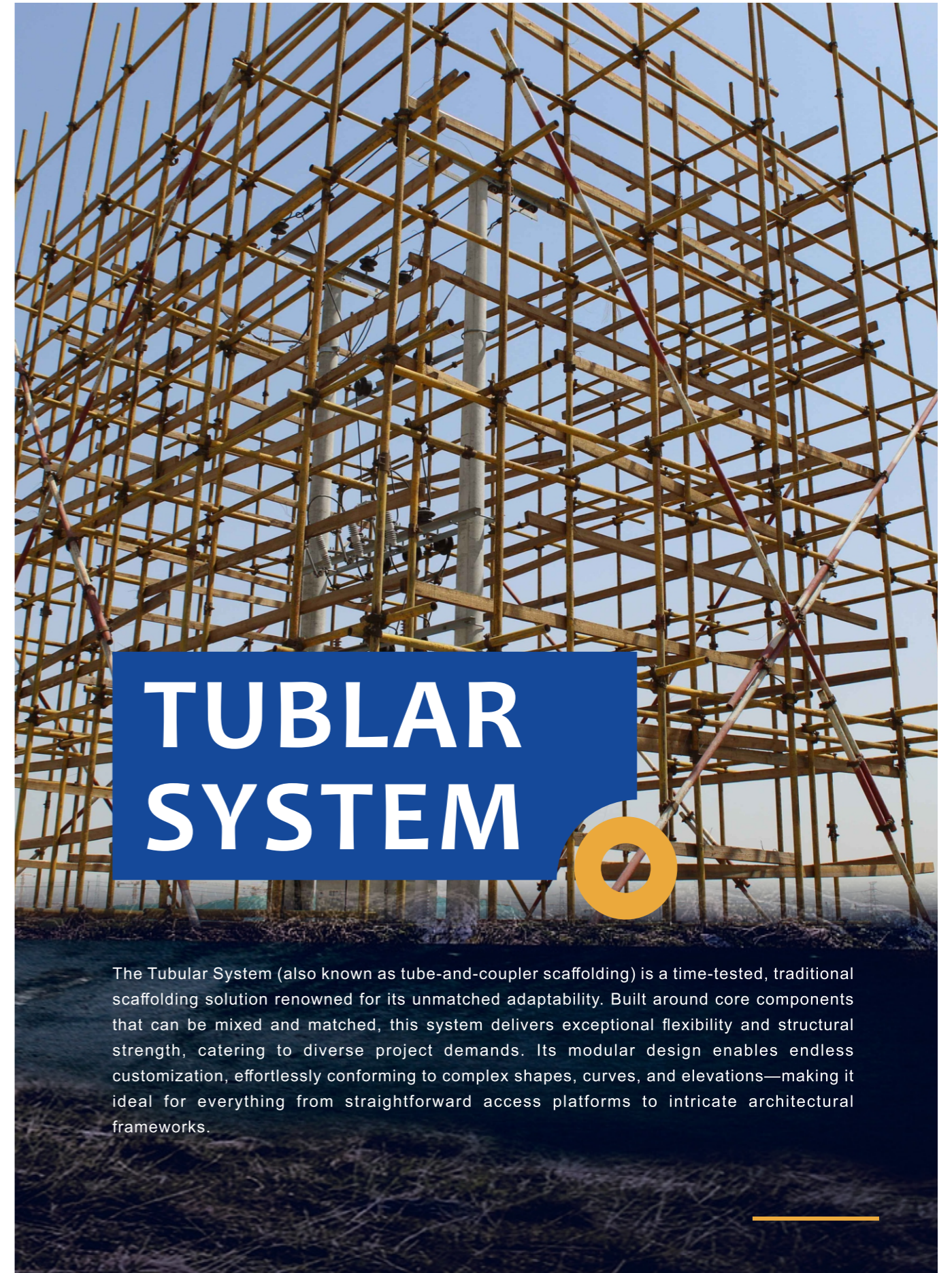
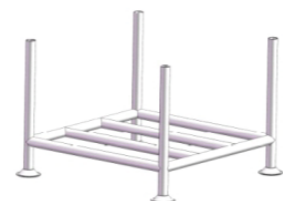
**STEEL CAGE**

ITEM CODE	SIZE(M)	WEIGHT APPROX.(KG)
ADTO01XXPJ0072	870x870x700x48.3x3.8mm	69.38



**STEEL PALLET**

ITEM CODE	SIZE(M)	WEIGHT APPROX.(KG)
ADTO01XXPJ0069	870x870x700x48.3x3.8mm	32.76



**TUBULAR SYSTEM**

The Tubular System (also known as tube-and-coupler scaffolding) is a time-tested, traditional scaffolding solution renowned for its unmatched adaptability. Built around core components that can be mixed and matched, this system delivers exceptional flexibility and structural strength, catering to diverse project demands. Its modular design enables endless customization, effortlessly conforming to complex shapes, curves, and elevations—making it ideal for everything from straightforward access platforms to intricate architectural frameworks.

# SCAFFOLDING COUPLERS

Suppliers of a full range of scaffold fittings and can be marked with client's name at no extra cost.



**DF DOUBLE**  
0.98kg



**DF SWIVEL**  
1.08kg



**PS PUTLOG**  
0.63kg



**PS SLEEVE**  
1.0kg



**PS INNER JOINT**  
0.83kg



**DF BRC**  
0.63kg



**DF FIXED GIRDER**  
1.5kg



**DF JOINT PIN**  
1.1kg



**DF SWIVEL GIRDER**  
1.44kg



**PS LADDER CLAMP**  
0.58kg



**DF LADDER CLAMP**  
0.7kg



**DF HALF COUPLER**  
0.55kg



**BASE PLATE**  
M36×1.5/150×150×5mm  
1.01kg



**PS DOUBLE**  
0.83kg



**PS SWIVEL**  
1.02kg



**PS HALF COUPLER**  
0.48kg



**ROOFING COUPLER**  
1.23kg



**PS STAIRTREAD  
-COUPLER**  
1.53kg



**ITALIAN TYPE  
PS DOUBLE**  
1.35kg



**GERMAN TYPE  
DOUBLE**  
1.3kg



**GERMAN TYPE  
SWIVEL**  
1.4kg



**DF HALF COUPLER WITH  
EXTERNAL HOOK LOCK**  
0.9kg



**DF SLEEVE**  
1.75kg



**TWIN WEDGE HEAD  
COUPLER**  
1.27kg

## HDG SCAFFOLD TUBE

ITEM CODE	DESCRIPTION	SIZE(M)
ADTO001GCJG-4	Conforms to EN39 Standard Grade Q235B Available in various lengths up to 6.4m(21')	Diameter 48.3mm × Wall thickness 4mm
ADTO001GCJG-3.2		Diameter 48.3mm × Wall thickness 3.2mm



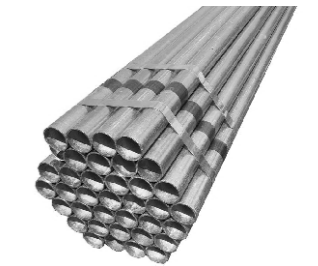
## HIGH YIELD SCAFFOLD TUBE

ITEM CODE	DESCRIPTION	SIZE(M)
ADTO002GCJG-3.2	Conforms to EN10219 Standard Grade Q355 Available in various lengths up to 6.4m(21')	Diameter 48.3mm × Wall thickness 3.2mm



## ALUMINIUM TUBE

ITEM CODE	DESCRIPTION	SIZE(M)	WEIGHT APPROX.(KG)
ADTO002GCJG-3.2	Conforms to EN755 Standard Grade 6082-T6 Available in various lengths up to 6.4m(21')	Diameter 48.3mm × Wall thickness 4mm	1.5



## PLASTIC SCAFFOLD BASE PAD

ITEM CODE	DESCRIPTION	SIZE(M)	WEIGHT APPROX.(KG)
ADTO001PSP	Ensure maximum stability and protect the ground underneath, long-lasting and recyclable	Outer Size 300×500×50mm Internal base plate 165×165mm	1.4



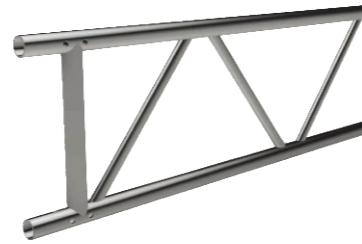
## SCAFFOLD TAG

ITEM CODE	DESCRIPTION	SIZE(M)	WEIGHT APPROX.(KG)
ADTO001ST-01	Tags are used to indicate the status of the scaffolding	Standard	0.09



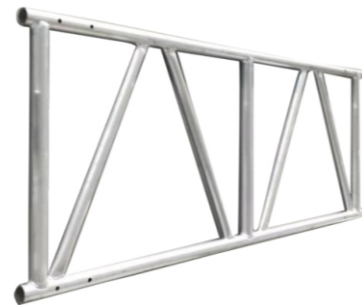
**450MM ALU BEAM/450MM SPIGOT**

ITEM CODE	DESCRIPTION	SIZE(M)	WEIGHT APPROX.(KG)
ADTO-ALB4-4100	Used in the construction of a variety of structures due to their flexible combinations, lightweight material and durability.	450x4100mm 6082 T6	18.86
ADTO-ALB4-6100		450x6100mm 6082 T6	27.92
ADTO-ALB4-8100		450x8100mm 6082 T6	36.98
ADTO-ALB4-SP		500x36x6mm 6082 T6	0.83



**780MM ALU BEAM/780MM SPIGOT**

ITEM CODE	DESCRIPTION	SIZE(M)	WEIGHT APPROX.(KG)
ADTO-ALB7-3000	Used in the construction of a variety of structures due to their flexible combinations, lightweight material and durability.	780x3000mm 6082 T6	15.17
ADTO-ALB7-4000		780x4000mm 6082 T7	20.66
ADTO-ALB7-5000		780x5000mm 6082 T6	26.15
ADTO-ALB7-6000		780x6000mm 6082 T6	31.49
ADTO-ALB7-SP		495x38x5mm 6082 T6	1.14



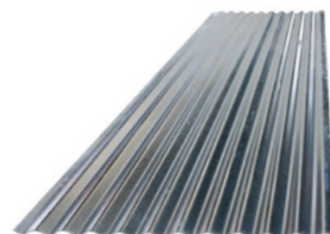
**STEEL BOARD**

ITEM CODE	DESCRIPTION	SIZE(M)	WEIGHT APPROX.(KG)
ADTO-STBD-3	Available in various lengths between 3ft to 13ft, conforms to BS EN12811-1 Fire retardant and long lasting compare with traditional wooden board.	225x38x914mm(3')	4.79
ADTO-STBD-4		225x38x1220mm(4')	6.20
ADTO-STBD-5		225x38x1524mm(5')	7.87
ADTO-STBD-6		225x38x1829mm(6')	9.54
ADTO-STBD-8		225x38x2438mm(8')	12.61
ADTO-STBD-10		225x38x3048mm(10')	15.68
ADTO-STBD-13		225x38x3962mm(13')	20.42



**CORRUGATED SHEET**

ITEM CODE	DESCRIPTION	SIZE(M)	WEIGHT APPROX.(KG)
ADTO-CRSH-10	Used in the construction industry for two purposes – roofing and siding	W762x3000mm	12.91
ADTO-CRSH-8		W762x2400mm	10.33



**STEEL SCAFFOLD LADDER 50x25x1.5MM/50x25x2MM**

ITEM CODE	DESCRIPTION	SIZE(M)	WEIGHT APPROX.(KG)
ADTO-STL-3000	The steel ladder design provides added stability and support, making them ideal for use on scaffolding	390x3000mm	14.20
ADTO-STL-3500		390x3500mm	16.80
ADTO-STL-4000		390x4000mm	19.40
ADTO-STL-5000		390x5000mm	24.10
ADTO-STL-6000		390x6000mm	35.90
ADTO-STL-7000		390x7000mm	42.20



**LADDER ACCESS TRAP DOOR**

ITEM CODE	DESCRIPTION	SIZE(M)	WEIGHT APPROX.(KG)
ADTO-LATD-001	Designed to prevent falls from exposed openings	H580xW710	9.00



**LADDER GATE**

ITEM CODE	DESCRIPTION	SIZE(M)	WEIGHT APPROX.(KG)
ADTO-LAGT-001	Spring action for safe access and exit from ladder	H960xW520	10.00



**STEEL LADDER BEAM,HDG**

ITEM CODE	DESCRIPTION	SIZE(M)	WEIGHT APPROX.(KG)
ADTO-STB-10	Compatible with traditional tube and fittings and used to enable clear spans to be constructed between adjacent scaffolding structure.	310x3050mm(10')	29.22
ADTO-STB-13		310x3960mm(13')	37.57
ADTO-STB-16		310x4880mm(16')	46.93
ADTO-STB-21		310x6400mm(21')	61.51



# ALUMINIUM MOBILE SCAFFOLD TOWERS

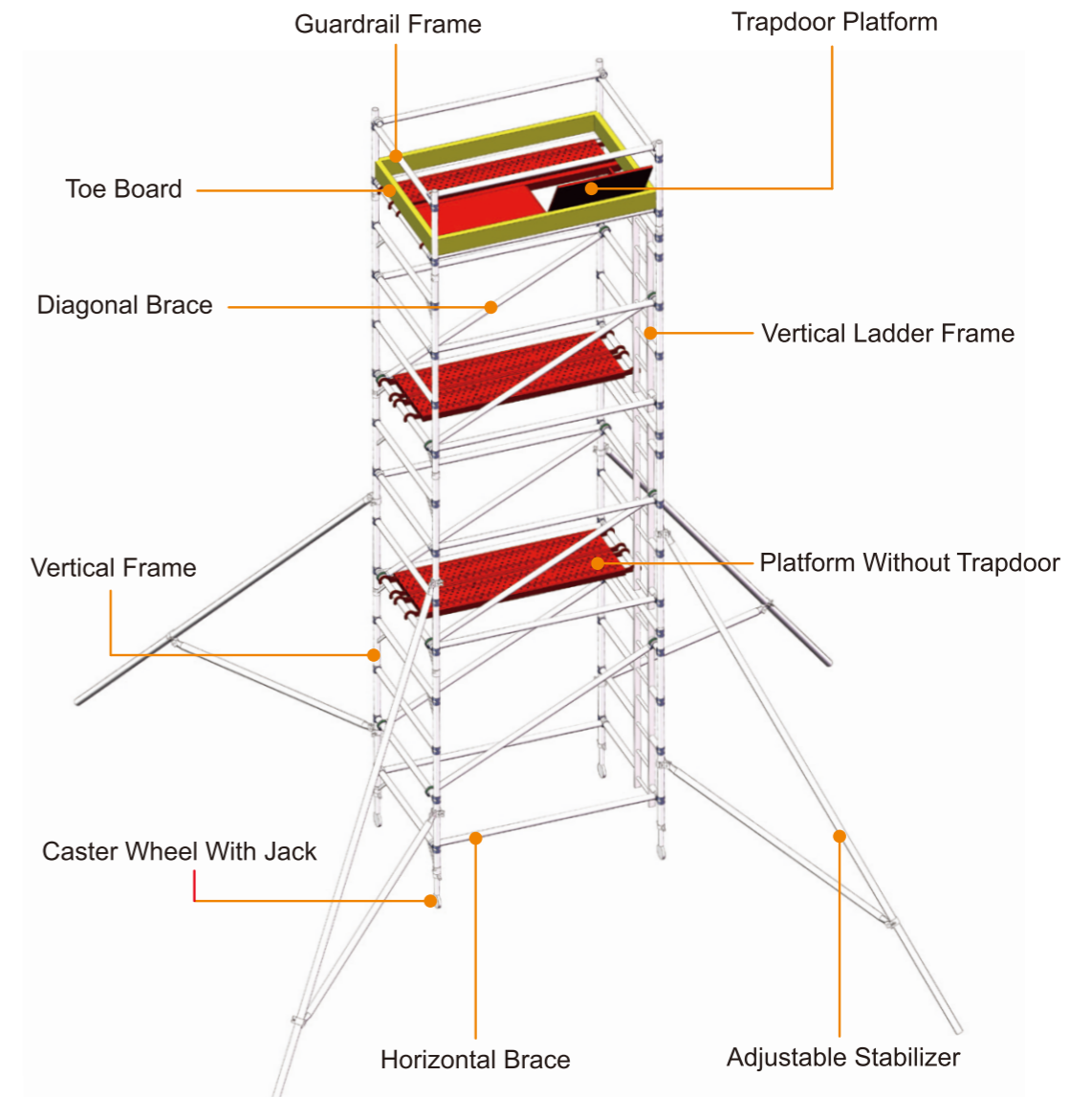
EFFECTIVE

VERSATILE

EASY ERECTION



Aluminium Mobile Scaffold Towers are an essential tool for any construction or maintenance project. With their lightweight construction, mobility, safety and versatility features, offers a reliable and efficient solution for accessing elevated work areas. Making them the ideal choice for a wide range of applications.



## FEATURES

- ❖ Manufactured and tested in compliance with BS EN1004:2004
- ❖ Fabricated from high-grade aluminum alloy, lightweight yet robust
- ❖ Easy to assemble and disassemble
- ❖ Highly resistant to corrosion, ensuring the scaffold maintain their structural integrity even in harsh environments.
- ❖ Slip Resistant platforms with closing trapdoors and wind locks, ensure the safety of workers
- ❖ Various tower widths and heights to suit different applications
- ❖ Safe working load of 272kg per platform level up to a maximum of 900kg per tower ( including self weight)

# ALUMINIUM SCAFFOLDING TOWER SERIES

ITEM CODE	PLATFORM HEIGHT(M)	WORKING HEIGHT(M)
ADICL-SER-2.25	2.25	4
ADICL-SER-3.45	3.45	5.2
ADICL-SER-4.25	4.25	6
ADICL-SER-5.45	5.45	7.2
ADICL-SER-6.25	6.25	8
ADICL-SER-7.5	7.5	9.3
ADICL-SER-8.3	8.3	10.1
ADICL-SER-9.5	9.5	11.3
ADICL-SER-10.3	10.3	12
ADICL-SER-11.5	11.5	13.3
ADICL-SER-12.3	12.3	14



ITEM CODE	PLATFORM HEIGHT(M)	WORKING HEIGHT(M)
ADSL-SER-2.25	2.25	4
ADSL-SER-3.45	3.45	5.2
ADSL-SER-4.25	4.25	6
ADSL-SER-5.45	5.45	7.2
ADSL-SER-6.25	6.25	8
ADSL-SER-7.5	7.5	9.3
ADSL-SER-8.3	8.3	10.1
ADSL-SER-9.5	9.5	11.3
ADSL-SER-10.3	10.3	12
ADSL-SER-11.5	11.5	13.3
ADSL-SER-12.3	12.3	14



Safe working load of 272kg per platform level up to a maximum of 900kg per tower ( including self weight)

# COMPONENTS

## VERTICAL FRAME

ITEM CODE	SIZE(MM)	NO. OF RUNGS	W.T (KG)
ADVFL-AL13501000	1350x1000	3	7
ADVFL-AL13501600	1350x1600	4	8.7
ADVFL-AL13502000	1350x2000	5	10.4



## VERTICAL LADDER FRAME

ITEM CODE	SIZE(MM)	NO. OF RUNGS	W.T (KG)
ADVLF-AL13501000	1350x1000	3	8.4
ADVLF-AL13501600	1350x1600	4	10.6
ADVLF-AL13502000	1350x2000	5	13



## GUARDRAIL FRAME

ITEM CODE	SIZE(MM)	NO. OF RUNGS	W.T (KG)
ADGR-AL13501000	1350x1000	3	6



## SIDE PROTECTION GUARDRAIL

ITEM CODE	LENGTH(MM)	W.T (KG)
ADSPG-AL3002000	300x2000	5
ADSPG-AL3002500	300x2500	5.8
ADSPG-AL3003000	300x3000	6.7



## TOE BOARD

ITEM CODE	LENGTH(MM)	W.T (KG)
ADTB-AL13502000	1350x2000	10
ADTB-AL13502500	1350x2500	12
ADTB-AL13503000	1350x3000	14



## ALU LADDER WITH SUPPORT

ITEM CODE	SIZE(MM)	W.T (KG)
ADLWS-AL4102070	410x2070	8



**HORIZONTAL BRACE**

ITEM CODE	LENGTH(MM)	W.T (KG)
ADHB-AL2000	2000	2.3
ADHB-AL2500	2500	2.8
ADHB-AL3000	3000	3.2



**ADJUSTABLE STABILIZER**

ITEM CODE	LENGTH(MM)	W.T (KG)
ADSB-AL3000	3000	6
ADSB-AL6000	6000	14.3



**PLATFORM WITHOUT TRAPDOOR**

ITEM CODE	LENGTH(MM)	W.T (KG)
ADPOHA-AL2000	2000x600	18
ADPOHA-AL2500	2500x600	21
ADPOHA-AL3000	3000x600	24



**TRAPDOOR PLATFORM**

ITEM CODE	LENGTH(MM)	W.T (KG)
ADPWHA-AL2000	2000x600	18.5
ADPWHA-AL2500	2500x600	21.5
ADPWHA-AL3000	3000x600	24.5



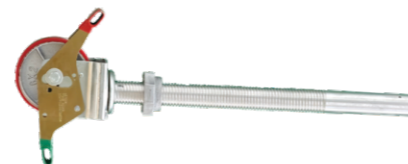
**LYNCH PIN**

ITEM CODE	SIZE(MM)	W.T (KG)
ADLP-AL1070	10x70	0.12



**CASTOR WHEEL WITH JACK**

ITEM CODE	LENGTH(MM)	W.T (KG)
ADCW-AL6	6	6
ADCW-AL8	8	7



# MULTI-FUNCTIONAL MOBILE SCAFFOLD TOWER



Multi-functional Mobile Scaffold Tower combines compactness, storage, ease of assembly and high load capacity (up to 454kg). The height-adjustable mobile scaffold allows changing the level of the platform every 5 cm from 69 cm to 185 cm. For this, accessories such as a safety railing or a set of supports with wheels are available. Its narrow design fits through standard door sizes, allowing you to move from room to room. requires no tools and can be assembled by one person in 2 minutes.



**MULTI-FUNCTIONAL MOBILE SCAFFOLD TOWER**

ITEM CODE	COMPONENTS	SIZE	QTY/PC
Multi-functional Scaffold ADTO01MTBS0019	Ladder Frame	W29"×H25"	2
	Platform Truss	L60"	2
	Plywood Platform	L60"	1
	Castor	5"	4
	Safety Snap Pin	ST	8

**FEATURES**

- ❖ Packing Dimensions: 191×77×13.5cm
- ❖ Weight: 58 kg
- ❖ Load capacity: 454 kg / combination of worker's weight and material
- ❖ Massive wheels with locking
- ❖ Each end is individually height adjustable

**MULTI-FUNCTIONAL MOBILE SCAFFOLD TOWER**

# MOBILE ELECTRIC SCAFFOLDING LIFT PLATFORM



A revolutionary advancement in elevated work solutions, Designed for modern construction, maintenance, and industrial applications, this system features motorized platforms that enable effortless height adjustment at the touch of a button, eliminating manual labor and reducing setup time. Durable, user-friendly, and compliant with industry standards, it prioritizes operator comfort and productivity while minimizing downtime. Elevate your workflow with a smarter, safer, and sustainable alternative to traditional scaffolding systems.

**CHAIN ELECTRIC SCAFFOLDING**

ITEM CODE	RISE HEIGHT	PLATFORM SIZE	SPECIFICATION	SELF WEIGHT	WEIGHT CAPACITY	MOTOR POWER
AD-CES01-2	2m	1.5mx0.8m	6mm (Chain)	210KG 220KG	300KG 500KG	1.85KW 50HZ 220V
AD-CES01-3	3m			240KG 250KG		
AD-CES01-4	4m			270KG 280KG		
AD-CES01-5	5m			300KG 310KG		
AD-CES01-6	6m			330KG 340KG		
AD-CES01-7	7m			360KG 370KG		
AD-CES01-8	8m			390KG 400KG		
AD-CES01-9	9m			420KG 430KG		
AD-CES01-10	10m			450KG 460KG		



**GEAR ELECTRIC SCAFFOLDING**

ITEM CODE	RISE HEIGHT	PLATFORM SIZE	SPECIFICATION	SELF WEIGHT	WEIGHT CAPACITY	MOTOR POWER
AD-GES02-1	1m	1.5mx0.8m	M5 (Rack)	200KG	500KG	1.85KW 50HZ 220V
AD-GES02-2	2m			240KG		
AD-GES02-4	4m			320KG		
AD-GES02-6	6m			400KG		
AD-GES02-8	8m			480KG		
AD-GES02-10	10m			560KG		



**STEEL WIRE ROPE ELECTRIC SCAFFOLDING**

ITEM CODE	RISE HEIGHT	PLATFORM SIZE	SPECIFICATION	SELF WEIGHT	WEIGHT CAPACITY	MOTOR POWER
AD-SWRES03-2	2m	1.5mx0.8m	5mm (Steel Wire Rope)	190KG	500KG	1.85KW 50HZ 220V
AD-SWRES03-3	3m			220KG		
AD-SWRES03-4	4m			250KG		
AD-SWRES03-5	5m			280KG		
AD-SWRES03-6	6m			310KG		
AD-SWRES03-7	7m			340KG		
AD-SWRES03-8	8m			370KG		
AD-SWRES03-9	9m			400KG		
AD-SWRES03-10	10m			430KG		



# FORMWORK ACCESSORIES



The formwork accessories includes products which are not directly included in a formwork system, most of these parts can be used with more than one system.

### TIMBER FORMWORK(FILM FACED PLYWOOD)

<b>Size</b>	1220x2440mm,915x1830mm,1250x2500mm
<b>Thickness</b>	12mm,15mm,18mm(as your request)
<b>Glue</b>	MR,E1,E2,WBP,MLM
<b>Core</b>	Poplar,Hardwood,Eucalyptus,birch,Combi, Bamboo
<b>Surface</b>	Dynea brown film, Polypropylene layer
<b>Moisture content</b>	7%-13%
<b>Grade</b>	A,B,AB,C
<b>Application</b>	Furniture,Construction,Decoration
<b>Loading</b>	8pallets/20ft,16pallets/40ft,18pallets/40HQ
<b>Packaging</b>	Bottom is pallets inner covered by plastic film. Outer protected by plywood or carton and then steel tape for strength
<b>Supply ability</b>	6000Cubic meter per Month
<b>Certificate</b>	FSC,CE,CARB,ISO9001:2000,F17



### ALUMINUM BEAM

**Material:**6061-T6 Aluminum  
Below are the main sizes we do

#### ADVANTAGES

- 1.Light weight
- 2.High strength
- 3.Corrosion resistance
- 4.High turnover frequency
- 5.High Residual
- 6.Low average cost

Pic	ITEM CODE	Product Name	Size	Weight (kg/m)	Material
	ADTO07LALX002	Aluminum beam	123*85mm	2.82	6061-T6
	ADTO07LALX003	Aluminum beam	165*120mm	5.4	6061-T6
	ADTO07XCML004	Aluminum beam	123*75mm	2.21	6061-T6
	ADTO07XCML005	Aluminum double beam with wood	120*80mm	2.65	6061-T6
	ADTO07XCML0046	Aluminum single beam with wood	167*127mm	4.99	6061-T6



### TIMBER BEAM

ADTO07MGZL0001

#### ADVANTAGES

- 1.High dimensional stability, long service life
- 2.Wide application in girder-based formwork system
- 3.Customized length

**H20 wooden timber beam 200\*80\*40 5.2KG/M Poplar core plywood**



## FORMWORK ACCESSORIES

### TIE ROD

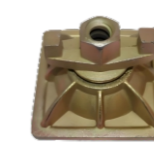
ITEM CODE	SPECIFICATION	MATERIAL
ADTO01PJCM0107	12mmx6m	Q235
ADTO01PJCM0108		45#
ADTO01PJCM0109	17mmx6m	Q235
ADTO01PJCM0110		45#



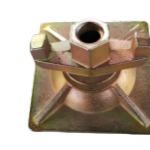
**TIE NUT**  
M17 100MM 0.6kg



**TIE NUT**  
M17 100MM 0.60kg



**TIE NUT**  
M17\*10/120\*120MM  
1.35kg



**TIE NUT**  
M17\*10/115\*115MM  
1.05kg



**WING NUT**  
0.28kg



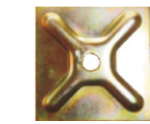
**STEEL CONE**  
0.615kg



**WATER STOP**  
0.48kg



**HEXAGONAL LONG NUT**  
0.21kg



**WASHER PLATE**  
0.57kg



**SPACER**  
50x50mm  
0.2-0.4kg



**RIB WASHER**  
M17 φ20mm 0.16kg  
M12 φ14mm 0.1kg



**SINGLE ARM WING NUT**  
M12\*4/85\*30mm 0.18kg  
M17\*6.35/90mm 0.25kg



**GRAVITY PIN DIA**  
10x48.3mm



**SLAB FORMWORK CLAMP**  
2.7kg



**FORMWORK SPRING CLAMP**  
Cast 0.38kg



**ADJUSTABLE FORMWORK CLAMP**  
Cast 4.4kg



**WALER**  
50x50/40x60mm



**WALER COUPLER**  
0.61kg



**WEDGE AND PIN**  
0.02-0.22kg



**FLAT TIE**  
0.2-0.8kg

**LIGHT-DUTY STEEL PROP**

ITEM CODE	DESCRIPTION	SIZE(M)	WEIGHT APPROX.(KG)
AD-LDSP-01		1.04-1.83	10.90
AD-LDSP-02	• EXTERNAL TUBE: Ø 60 X 3,6 MM. • INTERNAL TUBE: Ø 48 X 3,2 MM.	1.75-3.12	16.40
AD-LDSP-03	• PLATE: 140 X 140 X 8 MM. • PIN: Ø 16 MM.	1.98-3.35	17.20
AD-LDSP-04	• CAST COLLAR • POWDER COATED OR GALVANIZED	2.59-3.96	19.40
AD-LDSP-05		3.2-4.87	23.20



**HEAVY-DUTY ADJUSTABLE STEEL PROP**

ITEM CODE	DESCRIPTION	SIZE(M)
AD-HDSP-01	• EXTERNAL TUBE: Ø 57 X 2,3 MM.	1.5-2.5
AD-HDSP-02	• INTERNAL TUBE: Ø 48 X 2,3 MM. • PLATE: 120 X 120 X 6 MM.	1.7-3.0
AD-HDSP-03	• PIN: Ø 14 MM. • CUP COLLAR	1.95-3.5
AD-HDSP-04	• POWDER COATED OR GALVANIZED	2.26-4.0



**TELESCOPIC LADDER**

ITEM CODE	NO.OF STEP	SPECIFICATION	N.W. (KG)	MAX.LOAD (KG)	PACKAGE (PCS/CTN)	PACKING SIZE(CM)
ADTO07LTHL0003	7	Extended height:2m Folded height:0.675m	5.1	150	1	146.5x7.9x70
ADTO07LTHL0004	9	Extended height:2.6m Folded height:0.74m	6.9	150	1	47.5x8.0x75.5
ADTO07LTHL0005	11	Extended height:3.2m Folded height:0.8m	8.5	150	1	48.5x9.5x82
ADTO07LTHL0006	13	Extended height:3.8m Folded height:0.86m	10.2	150	1	49.5x10.3x88
ADTO07LTHL0007	15	Extended height:4.4m Folded height:0.92m	12.5	150	1	51x10.5x95
ADTO07LTHL0008	14	Extended height:5.6m Closed height:1.06m	14.1	150	1	108x50x9
ADTO07LTHL0009	15	Extended Height:6.0m Closed Height:1.09m	15.3	150	1	111x50x10



**ADTO-TLA SERIES**

CUSTOMIZED DESIGN AND DIMENSIONS ARE WARMLY WELCOMED.

**FIBERGLASS ROPE OPERATED EXTENSION LADDER**

ITEM CODE	NO.OF STEP	SPECIFICATION	N.W. (KG)	MAX.LOAD (KG)	PACKAGE (PCS/CTN)	PACKING SIZE(CM)
ADTO07LTFB0007	2x8	Extended height:4.8m Folded height:2.78m	14.25	150	1	250x43.5x16.5
ADTO07LTFB0009	2x10	Extended height:6m Folded height:3.35m	16.83	150	1	310x43.5x16.5
ADTO07LTFB0011	2x12	Extended height:7.2m Folded height:3.65m	19.38	150	1	370x43.5x16.5
ADTO07LTFB0013	2x14	Extended height:8.4m Folded height:4.25m	21.93	150	1	430x43.5x16.5
ADTO07LTFB0015	2x16	Extended height:9.6m Folded height:4.65m	24.5	150	1	490x43.5x16.5
ADTO07LTFB0017	2x18	Extended height:10.8m Folded height:5.25m	27.1	150	1	550x43.5x16.5
ADTO07LTFB0037	2x20	Extended height:12m Folded height:5.65m	29.5	150	1	600x43.5x16.5



**ADTO-FEL SERIES**

CUSTOMIZED DESIGN AND DIMENSIONS ARE WARMLY WELCOMED.

**TELESCOPIC LADDER**

ITEM CODE	NO.OF STEP	SPECIFICATION	N.W. (KG)	MAX.LOAD (KG)	PACKAGE (PCS/CTN)	PACKING SIZE(CM)
ADTO007LTILO028	4x2	Extended height:2.27m Folded height:0.64m	9.3	150	1	62.4x37x27
ADTO007LTILO029	4x3	Extended height:3.35m Folded height:0.91m	10.7	150	1	89.4x37x27
ADTO007LTILO030	4x4	Extended height:4.43m Folded height:1.18m	12.2	150	1	116.4x37x27
ADTO007LTILO031	4x5	Extended height:5.51m Folded height:1.45m	13.7	150	1	143.4x37x27
ADTO007LTILO032	4x6	Extended height:6.59m Folded height:1.72m	15.1	150	1	175x37x27



**ADTO-MAL SERIES**

CUSTOMIZED DESIGN AND DIMENSIONS ARE WARMLY WELCOMED.

**TELESCOPIC LADDER**

ITEM CODE	NO.OF STEP	SPECIFICATION	N.W. (KG)	MAX.LOAD (KG)	PACKAGE (PCS/CTN)	PACKING SIZE(CM)
ADTO07LTHL0018	4	Height:1.2m	5	150	1	125x42x14
ADTO07LTHL0019	5	Height:1.5m	6.2	150	1	155x44x14
ADTO07LTHL0020	6	Height:1.8m	7.1	150	1	185x46x14
ADTO07LTHL0021	7	Height:2.1m	8.2	150	1	215x48x14
ADTO07LTHL0022	8	Height:2.4m	9.5	150	1	245x50x14
ADTO07LTHL0023	9	Height:2.7m	10.5	150	1	275x52x14
ADTO07LTHL0024	10	Height:3m	11.5	150	1	305x54x14



**ADTO-ATD SERIES**

CUSTOMIZED DESIGN AND DIMENSIONS ARE WARMLY WELCOMED.

# PRODUCTION QUALITY CONTROL



Raw Materials Quality Inspection

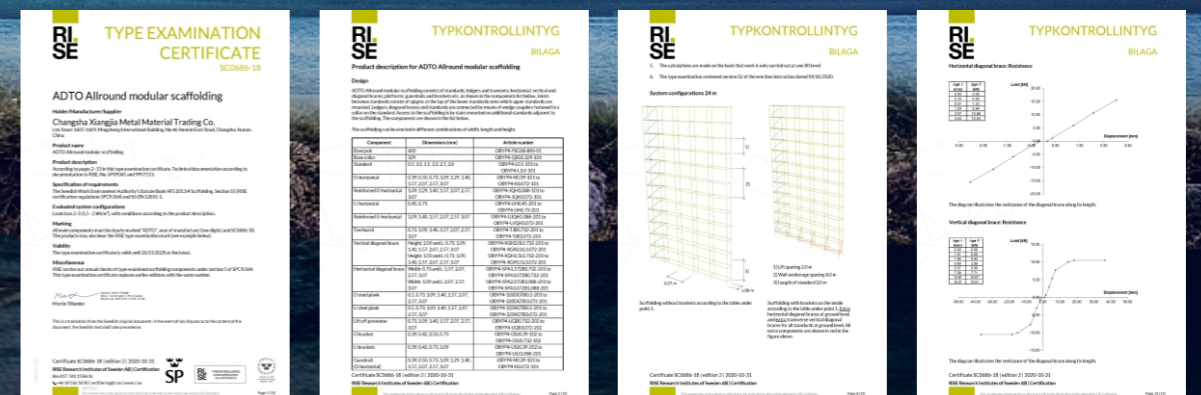


In-process Inspections



Inspection of the finished Products

# CERTIFICATION



**PRODUCT MANUAL**  
ONE-STOP BUILDING MATERIALS  
SUPPLY CHAIN PROVIDER